

PART OF THE SW. 1/4, OF SECTION 29, T.7N., R.1W., S.L.B. & M.

CHERRY SPRINGS VILLAS

414

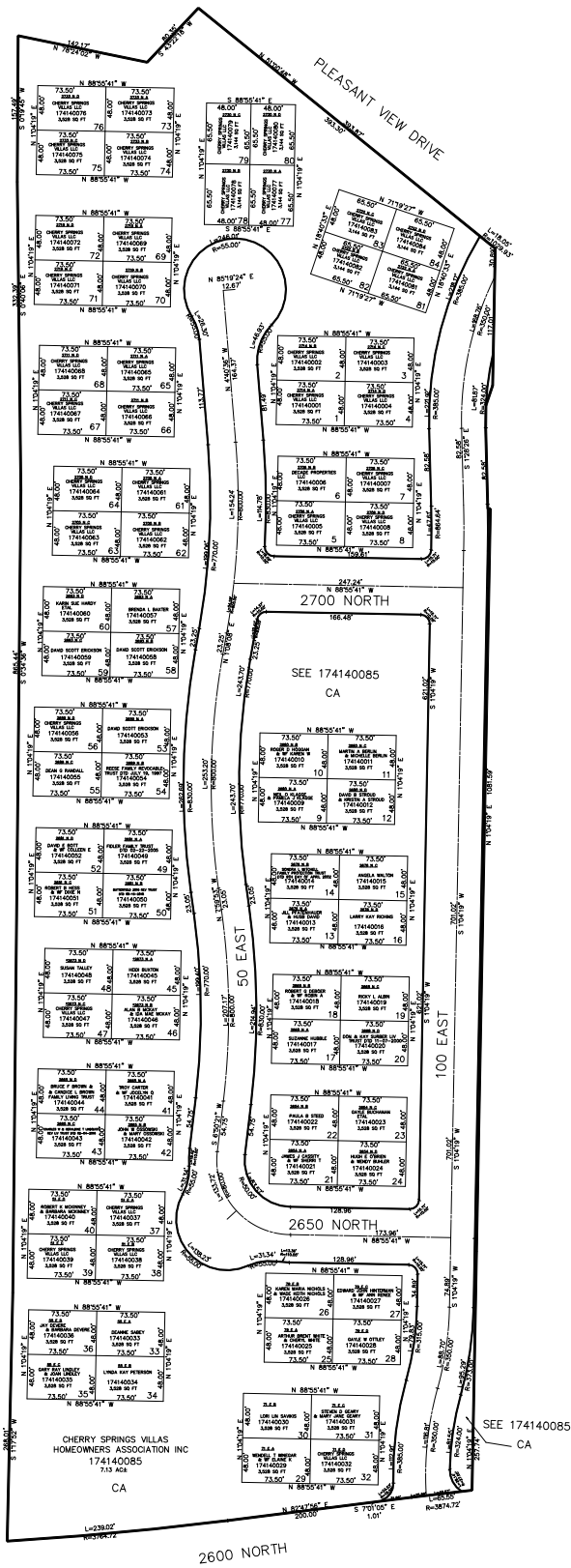
TAXING UNIT: 10

IN NORTH OGDEN CITY  
SCALE 1" = 200'

SEE PAGE 50

SEE PAGE 50

SEE PAGE 50



SEE PAGE 72

10' UTILITY & DRAINAGE EASEMENTS EACH  
SIDE OF PROPERTY LINES AS INDICATED  
BY DASHED LINES EXCEPT AS OTHERWISE  
SHOWN.

\*ADDRESS AFFIDAVIT E#2985252

FOR COMPLETE ENG DATA SEE  
ORIGINAL DEDICATION PLAT IN  
BOOK 84, PAGE 43 & 44 OF RECORDS.

\*FOR TAX PURPOSES ONLY\*